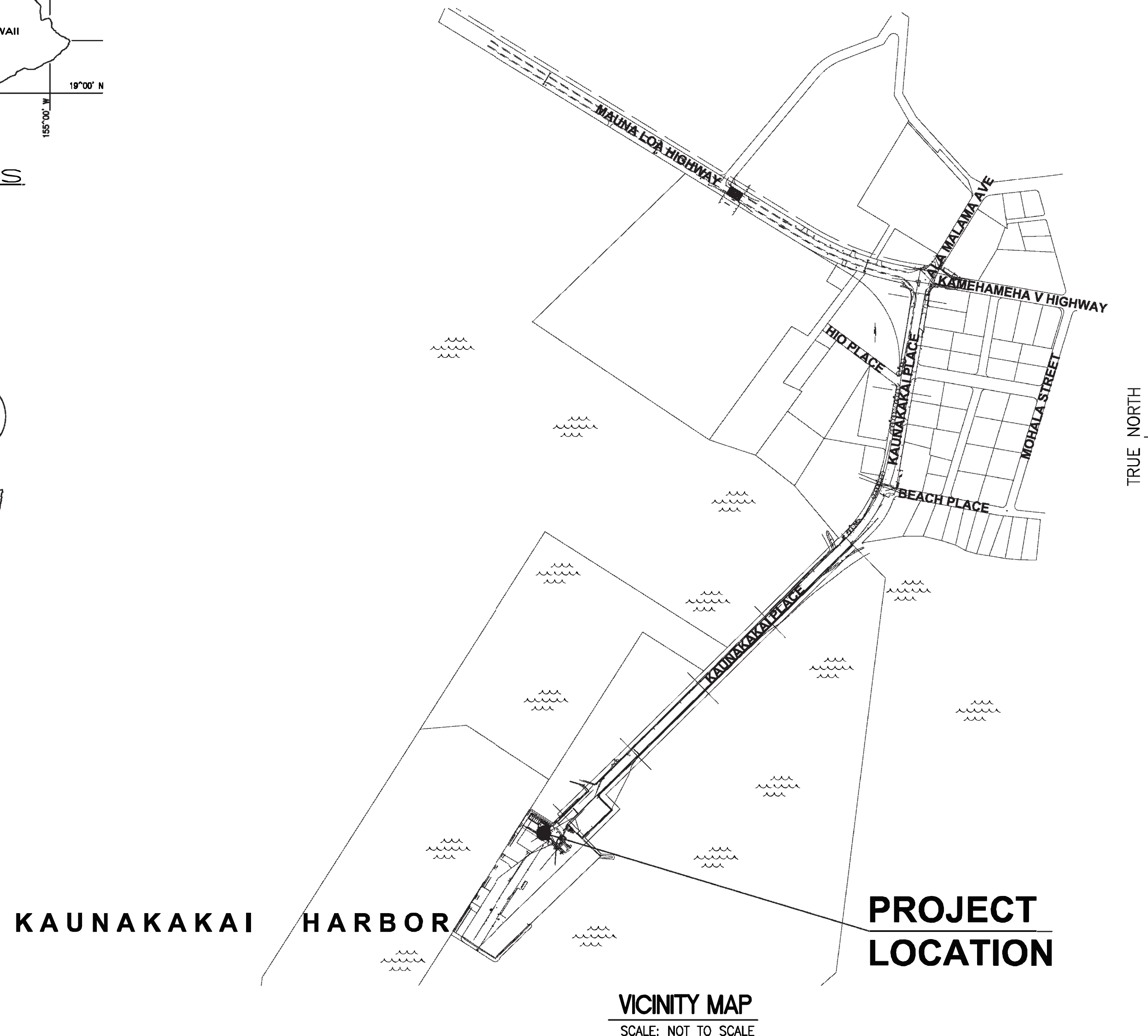
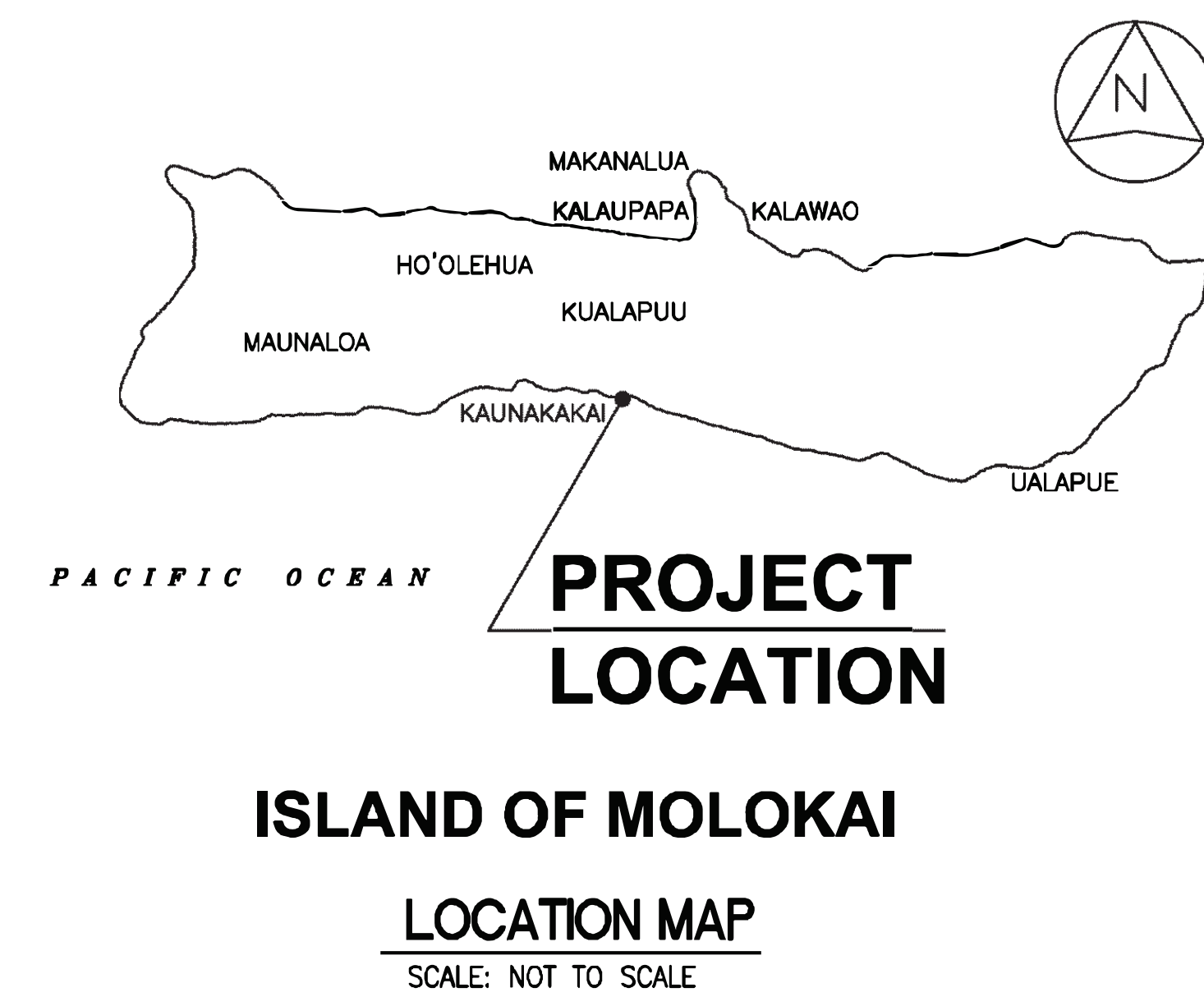
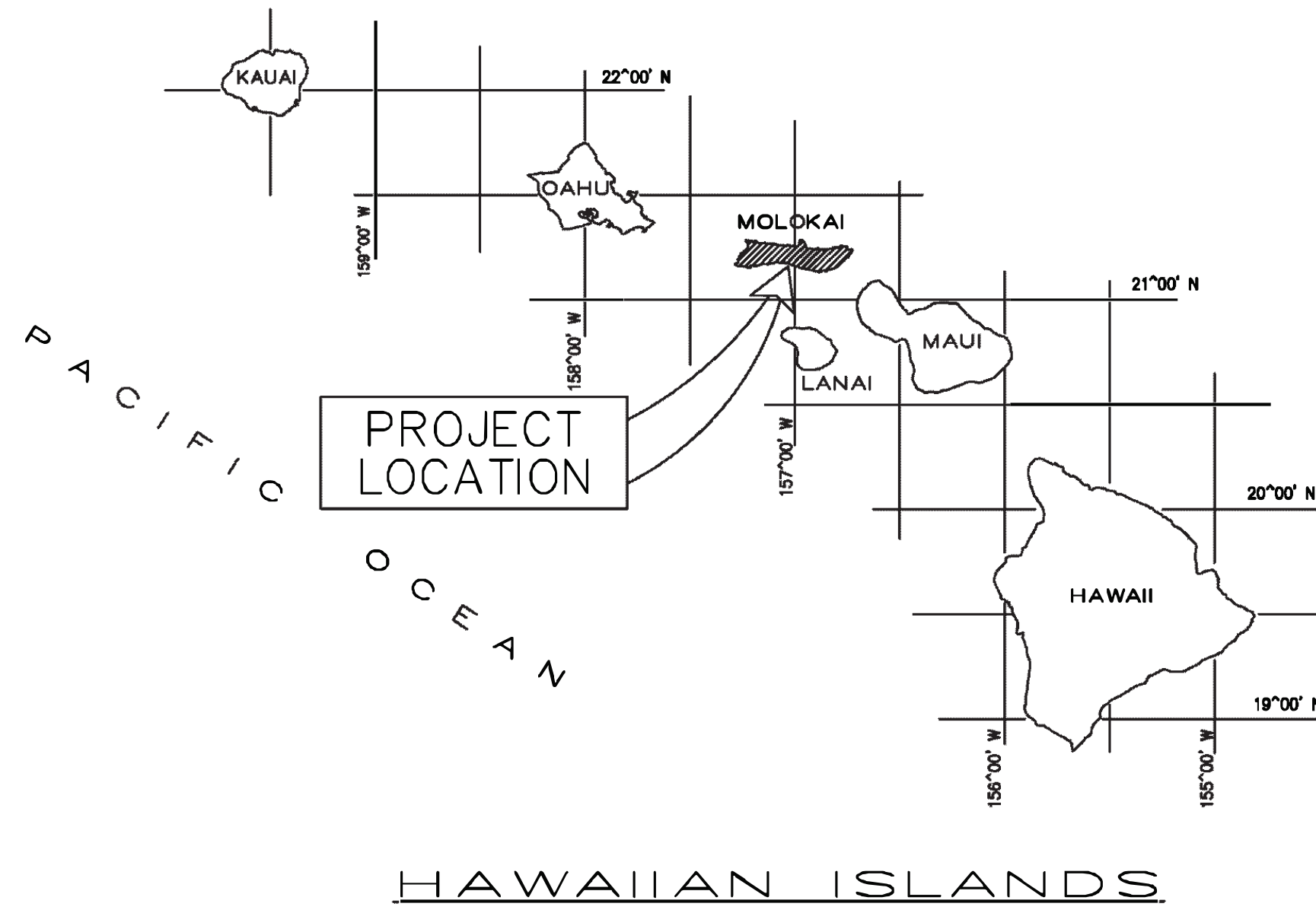


REPAIR LIFT STATION AT KAUNAKAKAI HARBOR, MOLOKAI, HAWAII

FOR THE
STATE OF HAWAII
DEPARTMENT OF TRANSPORTATION
HARBORS DIVISION


S30244R



CONSULTANT:

MECHANICAL ENTERPRISES, INC.
MECHANICAL ENGINEER

COFFMAN ENGINEERS, INC.
ELECTRICAL ENGINEER

DEPARTMENT OF TRANSPORTATION STATE OF HAWAII		SHEET
APPROVED BY:		T-1
for 	02/17/2026	1 OF 9 SHEETS
DIRECTOR OF TRANSPORTATION	DATE	

GENERAL NOTES:

- CONFORM TO ALL REQUIREMENTS OF THE 2018 IBC, 2018 UPC, 2018 IECC, AND 2018 NFPA 1 CODES OF THE COUNTY OF MAUI, STATE OF HAWAII HEALTH REGULATIONS, FIRE DEPARTMENT REGULATIONS, MANUFACTURER'S RECOMMENDATIONS, AND OTHER APPLICABLE REGULATIONS.
- EXAMINE ALL PROJECT PLANS AND BECOME FAMILIAR WITH ALL EXISTING CONDITIONS AND THE EXTENT OF REMOVAL, RELOCATION, AND/OR NEW WORK PRIOR TO BIDDING. NOTIFY AND COORDINATE WITH THE CONTRACTING OFFICER FOR ANY MAJOR DEVIATIONS OR DISCREPANCIES DISCOVERED IN THE PLANS AND SPECIFICATIONS DUE TO UNFORESEEN OR VARYING FIELD CONDITIONS.
- INSTALLATION SHALL BE GUARANTEED TO BE FREE FROM DEFECTS FOR ONE YEAR FROM FINAL DATE OF ACCEPTANCE OF THE PROJECT AS A WHOLE.
- CONTRACTOR SHALL VERIFY ALL FIELD CONDITIONS PRIOR TO BID AND CONSTRUCTION.
- CONTRACTOR SHALL FIELD VERIFY ALL EXISTING LINE SIZES, CONDITIONS, AND INVERTS PRIOR TO BID AND CONSTRUCTION.
- THE DRAWINGS AND SPECIFICATIONS ARE INTENDED TO COVER THE COMPLETE INSTALLATION OF SYSTEMS TO FUNCTION AS DESCRIBED AND SPECIFIED. THE OMISSION OF REFERENCE TO ANY NECESSARY ITEM OF LABOR OR MATERIAL SHALL NOT RELIEVE THE CONTRACTOR FROM PROVIDING SUCH LABOR AND MATERIAL AT NO ADDITIONAL COST TO THE STATE.
- DRAWING FILES WILL NOT BE AVAILABLE TO CONTRACTORS FOR SHOP DRAWINGS OR ANY OTHER PURPOSE.
- CAULK ALL PENETRATIONS WATERTIGHT. PROVIDE ALL CUTTING, PATCHING, AND RESTORING OF EXISTING SURFACES TO MATCH ORIGINAL SURFACE FINISHES. SPOT PAINT TO MATCH EXISTING SURFACES/COLOR.
- PREPARE SHOP DRAWINGS, QUANTITY AS PER SPECS, SUBMITTED TO THE CONTRACTING OFFICER FOR APPROVAL PRIOR TO THE START OF WORK. NO REPRODUCTIONS OF ANY KIND OF THE CONTRACT DOCUMENTS SHALL BE ACCEPTABLE AS SHOP DRAWINGS. PROVIDE ONE SET OF REPRODUCIBLE AS-BUILT DRAWINGS SHOWING THE ACTUAL INSTALLED CONDITIONS AND SUBMIT TO THE STATE UPON COMPLETION OF WORK.
- ALL EQUIPMENT SHALL BE CAPABLE OF FITTING INTO THE SPACES ALLOTTED WHILE MEETING THE MANUFACTURER'S RECOMMENDED ACCESS REQUIREMENTS. REVIEW ALL SPACES WHERE EQUIPMENT AND FIXTURES ARE TO BE INSTALLED PRIOR TO ORDERING OF ITEMS AND NOTIFY THE CONTRACTING OFFICER OF ANY INADEQUATE CLEARANCES OR CONDITIONS THAT WILL PREVENT THE PROPER INSTALLATION, MAINTENANCE, AND OPERATION OF THE EQUIPMENT AND FIXTURES.
- DRAWINGS ARE DIAGRAMMATIC IN NATURE AND DO NOT SHOW EVERY EXACT DETAIL OF PIPING. PROVIDE OFFSETS AS NECESSARY TO AVOID LOCAL OBSTRUCTIONS OR INTERFERENCES WITH OTHER TRADES. REVIEW ALL PIPING RUNS PRIOR TO FABRICATION AND IMMEDIATELY NOTIFY THE CONTRACTING OFFICER OF ANY INTERFERENCES AND/OR LACK OF ADEQUATE CLEARANCES.
- SHOULD PROJECT CONDITIONS REQUIRE REARRANGEMENT OF WORK, MARK SUCH CHANGES ON THE AS-BUILT DRAWINGS. IF THESE CHANGES REQUIRE ALTERNATE METHODS TO THOSE APPROVED BY THE CONTRACT DOCUMENTS, SUBMIT SHOP DRAWINGS SHOWING THE PROPOSED ALTERNATE METHODS TO THE CONTRACTING OFFICER FOR REVIEW/APPROVAL PRIOR TO PROCEEDING WITH WORK.
- CONTRACTOR SUBMITTALS ARE TO BE PROVIDED AS A COMPLETE PACKAGE. PIECEMEAL SUBMITTALS WILL NOT BE REVIEWED AND RETURNED.
- COORDINATE ALL WORK WHICH WILL AFFECT AREAS NOT IN CONTRACT WITH THE CONTRACTING OFFICER AND HARBOR OFFICE. SCHEDULE OFF-HOUR WORK WHEN REQUIRED TO MINIMIZE DISRUPTIONS.
- ALL STEEL SHALL BE HOT DIPPED GALVANIZED. GALVANIZED STEEL EXPOSED TO WEATHER SHALL HAVE WEATHER PROOF PAINT TO MATCH SURFACES. PROVIDE TWO EXTRA COATS OF EPOXY PAINT.
- ALL ELECTRICAL AND CONTROL WIRING SHALL BE IN CONDUIT. PROVIDE GALVANIZED STEEL PIPE CONDUIT FOR EXPOSED TO WEATHER CONDUIT.
- COORDINATE ALL WORK WITH OTHER TRADES TO AVOID INTERFERENCES AND DELAYS.
- SEISMICALLY BRACE ALL EQUIPMENT AND PIPING IN ACCORDANCE WITH THE CURRENT BUILDING CODE AND THEIR RESPECTIVE SEISMIC ZONE LOCATIONS.
- LOCATE ALL UTILITY LINES OR OTHER INTERFERENCES IN AREAS OF PROPOSED WORK PRIOR TO START OF WORK. REPAIR OR PAY FOR ALL DAMAGES TO EXISTING UTILITIES.
- PROVIDE DIELECTRIC UNIONS OR SEPARATIONS AT ALL DISSIMILAR METALS. PROVIDE UNIONS AFTER ALL SHUTOFF VALVES.
- ALL SWITCHES ND CONTROL ITEMS SHALL BE ADA ACCESSIBLE AND SHALL BE MOUNTED AT 44" AFF AS PER ADA REQUIREMENTS OR ACCORDING TO HARBOR OFFICE STAFF INSTRUCTIONS.
- COORDINATE ALL SWITH LOCATIONS WITH HARBOR OFFICE STAFF PRIOR TO INSTALLATION TO AVOID INTERFERENCES WITH PAINTING, BULLEIN BOARDS, FURNITURE, ETC. ANY ITEM NOT PROPERLY COORDINATED SHALL BE RELOCATED AT NO ADDITIONAL COST TO THE STATE.
- CONTRACTOR SHALL SCHEDULE, TAG, AND LABEL ALL VALVES AND PIPING. ALL PIPING SHALL ALSO BE LABELED WITH DIRECTION OF FLOW.
- ALL EXTERIOR NUTS, BOLTS, SCREWS, WASHERS, FASTENERS, SUPPORTS STRAPS, ETC. SHALL BE TYP 304 STAINLESS STEEL.
- CONTRACTOR SHALL COORDINATE THEIR WORK, INCLUDING WORK AND STAGING AREAS, AND SCHEDULE WITH DOT-HARBORS.
- CONTRACTOR SHALL MAINTAIN VEHICULAR AND PEDESTRIAN ACCESS TO KAUNAKAKAI HARBOR.
- PLANS WERE BASED ON RECORD INFORMATION. THE CONTRACTOR SHALL VERIFY CONDITIONS AND LOCATIONS.
- PROVIDE DIELECTRIC UNIONS OR SEPARATIONS AT ALL DISSIMILAR METALS. PROVIDE UNIONS AFTER ALL SHUTOFF VALVES.
- THE CONTRACTOR SHALL COMPLY WITH THE CLEAN WATER ACT AND SHALL BE RESPONSIBLE FOR CONFIRMANCE WITH THE APPLICABLE PROVISIONS OF CHAPTER 54, WATER QUALITY STANDARDS AND CHAPTER 55, WATER POLLUTION CONTROL OF TITLE 11, HAWAII ADMINISTRATIVE RULES. NO POLLUTANTS ARE ALLOWED TO BE DISCHARGED DIRECTLY OR INDIRECTLY INTO ADJACENT HARBOR WATER, THROUGH THE HARBORS STORM CONVEYANCE SYSTEM OR OTHER POTENTIAL PATHWAYS.
- THE CONTRACTOR SHALL SUBMIT A SITE-SPECIFIC BEST MANAGEMENT PRACTICE (BMP) PLAN TO HARBORS CONSTRUCTION ENGINEER PRIOR TO THE START OF ANY CONSTRUCTION WORK. THIS SITE-SPECIFIC BMP PLAN SHALL COMPLY WITH CORRESPONDING ARTICLE IN THE PROJECT SPECIFICATIONS AND PROPOSAL.

- IN CASE OF SPILL, LEAK, OR OTHER RELEASE CONTAINING A HAZARDOUS SUBSTANCE OR OIL, THE CONTRACTOR SHALL NOTIFY APPROPRIATE FACILITY PERSONNEL, EMERGENCY RESPONSE AGENCIES, AND REGULATORY AGENCIES FOLLOWING NOTIFICATION PROCEDURES, AND SHALL NOTIFY HARBORS CONSTRUCTION ENGINEER IMMEDIATELY (I.E., WITHIN 24-HOURS). SUCH CONTACT INFORMATION MUST BE POSTED AT LOCATIONS THAT ARE READILY ACCESSIBLE.
- THE CONTRACTOR SHALL EXERCISE CAUTION WHENEVER CONSTRUCTION CROSSES OR IN CLOSE PROXIMITY OF UNDERGROUND LINES (INCLUDING BUT NOT LIMITED TO ELECTRIC UNDERGROUND LINES, FUEL OIL PIPELINES, ETC.). FOR VERIFICATION OF UNDERGROUND LINES, THE CONTRACTOR SHALL CALL THE HAWAII ONE-CALL-CENTER AT 811 OR 866-423-7287 MINIMUM OF FIVE (5) WORKING DAYS IN ADVANCE.


MECHANICAL EQUIPMENT SCHEDULE

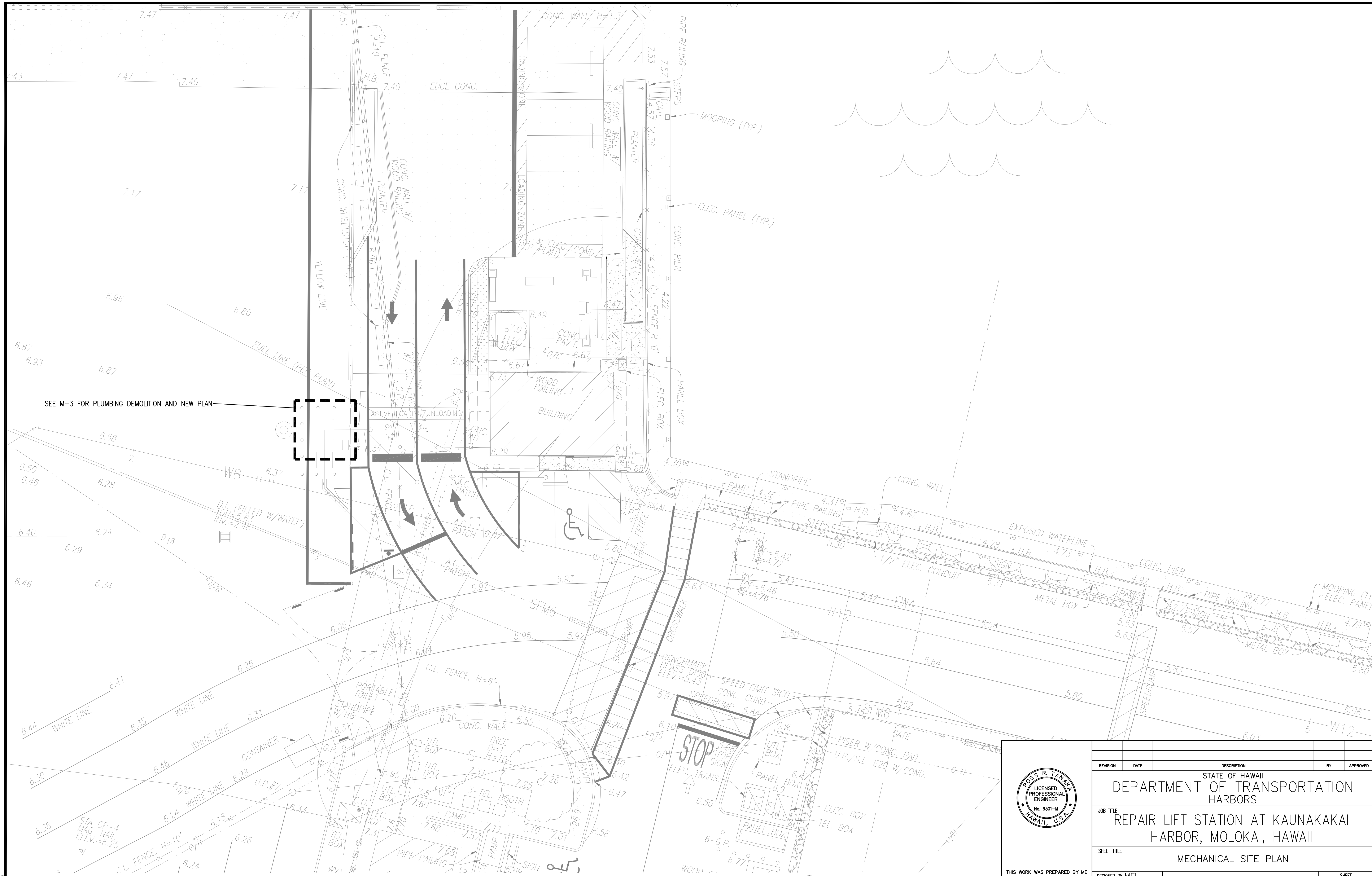
ALL OUTDOOR EQUIPMENT SHALL HAVE FACTORY APPLIED CORROSION INHIBITOR COATING ON CASING PROVIDE PHASE FAILURE/PHASE REVERSAL/OVER VOLTAGE/UNDER VOLTAGE ELECTRICAL PROTECTION PROVIDE CONTROL VOLTAGE TRANSFORMERS. PROVIDE NEMA 4, S.S. ENCLOSURE OR OTHER CORROSION RESISTANT AND WEATHER PROOF ENCLOSURE FOR PUMP CONTROLLER.

UNIT NO.	AREA SERVED	TYPE	GPM	TOTAL HEAD (FT.)	RPM	ELECTRICAL				MAKE & MODEL OR APPROVED EQUAL	SINGLE OR DUPLEX	REMARKS
						HP	V	PH	HZ			
SP 1	KAUNAKAKAI HARBOR SEWAGE WETWELL	SEWAGE LIFT STATION	40	20	3450	3	230	1	60	PENTAIR MYERS SUBMERSIBLE GRINDER PUMP MODEL VS(X)30-21	DUPLEX	PROVIDE DUPLEX CONTROL PANEL W/ ALARM PACKAGE AND REMOTE ALARM STROBE AND HORN, EXPLOSIVE PROOF FITTINGS(CLASS 1 DIVISION 1 OR APPROVED EQUAL), DISCONNECTS, THE LEVEL CONTROL SYSTEM, GRINDER MECHANISM, AND OTHER ACCESSORIES AS REQUIRED FOR A COMPLETE PUMP STATION. PROVIDE W/ ALL 316 STAINLESS STEEL METAL PARTS.
SP 2	KAUNAKAKAI HARBOR SEWAGE WETWELL	SEWAGE LIFT STATION	40	20	3450	3	230	1	60			

LEGEND		
SYMBOL	ABBRV	DESCRIPTION
	AFF	ABOVE FINISHED FLOOR
☒	AP	ACCESS PANEL
	BLW	BELOW
⊕		CENTER LINE
⊕—	COTG	CLEANOUT TO GRADE
	CLSM	CONTROLLED LOW-STRENGTH MATERIAL
∅	DIA	DIAMETER
	DN	DOWN
	DWGS	DRAWINGS
	ELEC	ELECTRICAL
	ELEV	ELEVATION
	(E)	EXISTING
	GND	GROUND
	HB	HOSE BIBB
	INV	INVERT
	MAX	MAXIMUM
	MIN	MINIMUM
	(N)	NEW
	POC	POINT OF CONNECTION
	POR	POINT OF REMOVAL
	(R)	REMOVE
—	S	SANITARY
	SMH	SEWER MANHOLE
	S.S.	STAINLESS STEEL
	SP	SUBMERSIBLE PUMP
	TERM	TERMINATE
	TYP	TYPICAL
	W/	WITH

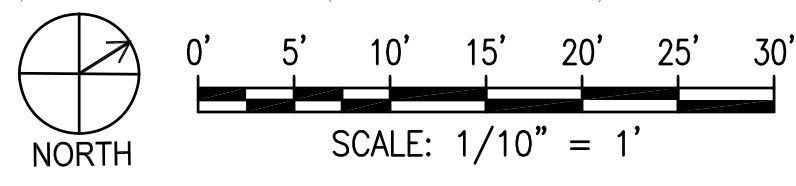
INDEX OF DRAWINGS		
DWG.NO	SHEET NO.	DESCRIPTION
1	T-1	TITLE SHEET
2	M-1	GENERAL NOTES, LEGEND, SEWER LIFT STATION SCHEDULE
3	M-2	MECHANICAL SITE PLAN
4	M-3	PLUMBING DEMOLITION AND NEW PLAN
5	M-4	LIFT STATION SECTION AND DETAILED DRAWINGS
6	E-1	ELECTRICAL SYMBOL LIST, GENERAL NOTES AND DUCT DETAIL
7	E-2	ELECTRICAL SITE PLAN
8	E-3	ELECTRICAL PLANS
9	E-4	ONE LINE DIAGRAMS

 <p>THIS WORK WAS PREPARED BY ME OR UNDER MY SUPERVISION EXP 4-30-26 <i>Ross R. Tanaka</i> MECHANICAL ENTERPRISES, INC.</p>	REVISION	DATE	DESCRIPTION	BY	APPROVED
	STATE OF HAWAII DEPARTMENT OF TRANSPORTATION HARBORS				
	JOB TITLE REPAIR LIFT STATION AT KAUNAKAKAI HARBOR, MOLOKAI, HAWAII				
	SHEET TITLE GENERAL NOTES, LEGEND, SEWER LIFT STATION SCHEDULE				
DESIGNED BY: MEI				JOB NUMBER S30244R	
DRAWN BY: MEI					
CHECKED BY: RRT					
DATE: 02/2026					
SCALE: AS SHOWN				SHEET M-1 2 of 9 SHS.	



SEE M-3 FOR PLUMBING DEMOLITION AND NEW PLAN

1 MECHANICAL SITE PLAN
SCALE: 1/10" = 1'-0"



THIS WORK WAS PREPARED BY ME OR UNDER MY SUPERVISION
EXP 4-30-26
Ross R. Tanaka
MECHANICAL ENTERPRISES, INC.

REVISION	DATE	DESCRIPTION	BY	APPROVED
STATE OF HAWAII DEPARTMENT OF TRANSPORTATION HARBORS				
JOB TITLE REPAIR LIFT STATION AT KAUNAKAKAI HARBOR, MOLOKAI, HAWAII				
SHEET TITLE MECHANICAL SITE PLAN				
DESIGNED BY: MEI				SHEET M-2
DRAWN BY: MEI				JOB NUMBER S30244R
CHECKED BY: RRT				
DATE: 02/20/26				
SCALE: AS SHOWN				3 of 9 SHEETS

GENERAL NOTES:

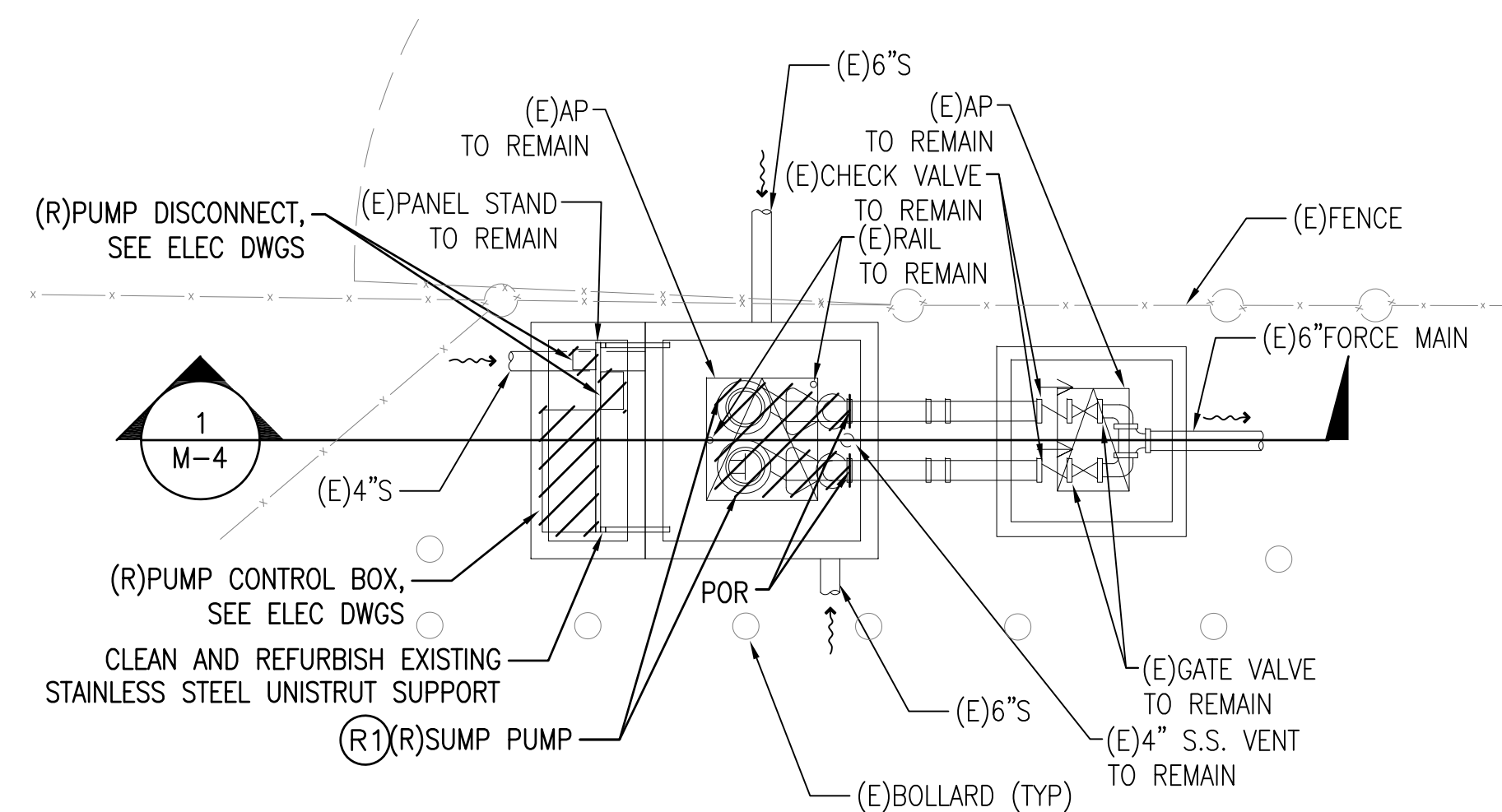
1. CONTRACTOR TO PROVIDE CONTROL WIRING AS PER MANUFACTURER'S RECOMMENDATIONS. ALL WIRING SHALL BE INSTALLED IN CONDUIT AND SHALL BE IN ACCORDANCE WITH THE NATIONAL ELECTRICAL CODE (NEC) 2020. CONTRACTOR SHALL BE RESPONSIBLE FOR WIRE SIZING.

DEMOLITON WORK NOTES

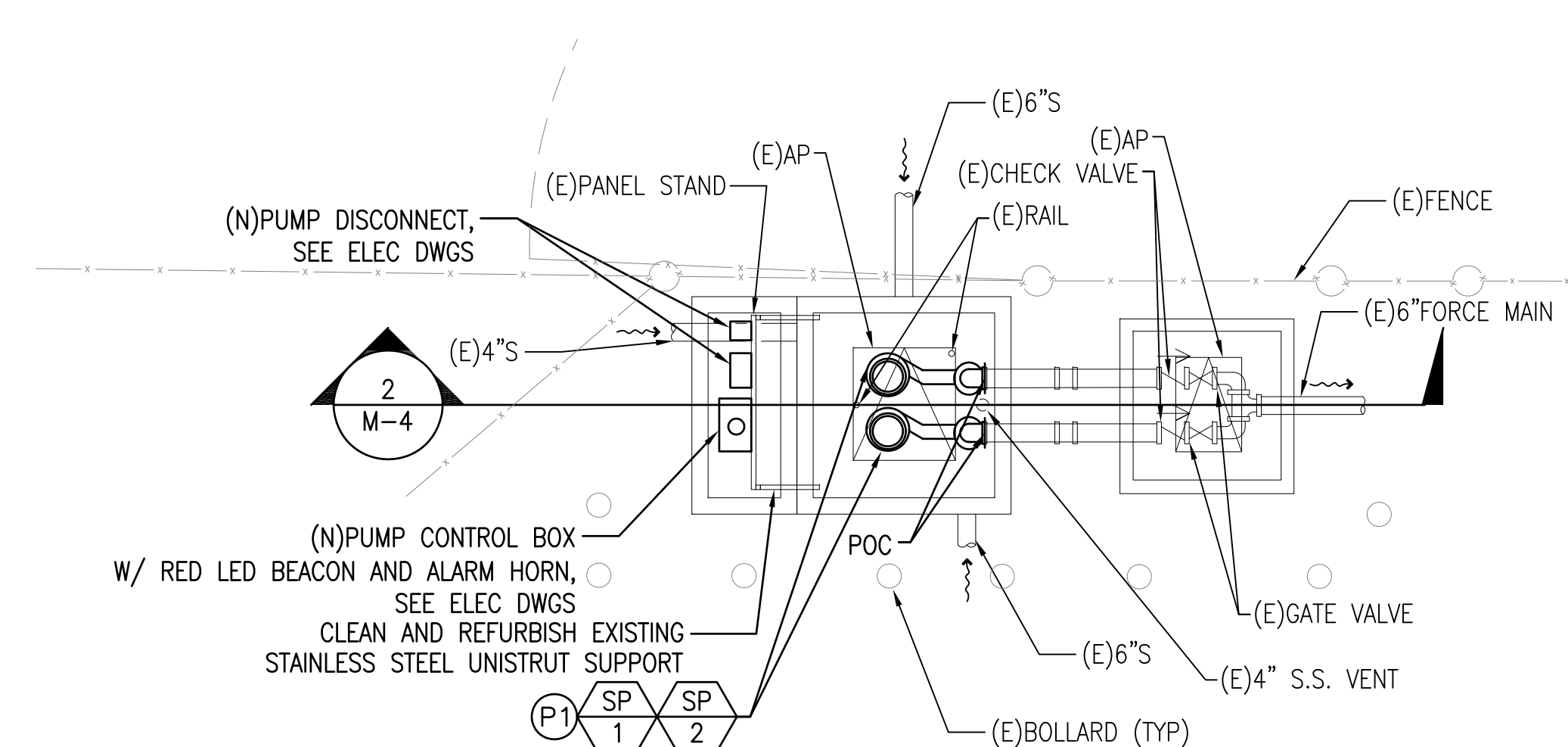
(R1) EXISTING SEWER SUMP PUMP TO BE REMOVED COMPLETELY INCLUDING ASSOCIATED CONTROL PANEL, DISCONNECT, WIRING, ETC. REMOVE ASSOCIATED PIPING FROM SUMP PUMP TO POR AS SHOWN. PATCH AND REPAIR TO MATCH EXISTING. CONTRACTOR TO FIELD VERIFY.

NEW PLUMBING WORK NOTES

(P1) PROVIDE AND INSTALL NEW SEWER SUMP PUMP COMPLETELY. PROVIDE AND INSTALL NEW SEWER SUMP PUMP WITH SOLIDS HANDLING SYSTEM, NEW CONTROL PANEL, EXPLOSIVE PROOF FITTINGS, DISCONNECTS, ELECTRICAL WIRING, GRINDER MECHANISM, NEW DISCHARGE PIPING AND FITTINGS AS REQUIRED TO CONNECT TO EXISTING PIPING, AND ASSOCIATE ACCESSORIES AS REQUIRED. MODIFIED EXISTING PANEL STAND AS REQUIRED. PATCH AND REPAIR TO MATCH ADJACENT SURFACES. CONTRACTOR TO FIELD VERIFY.

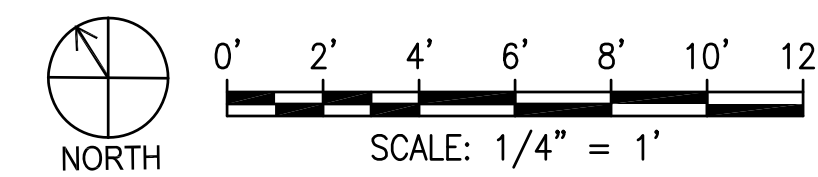


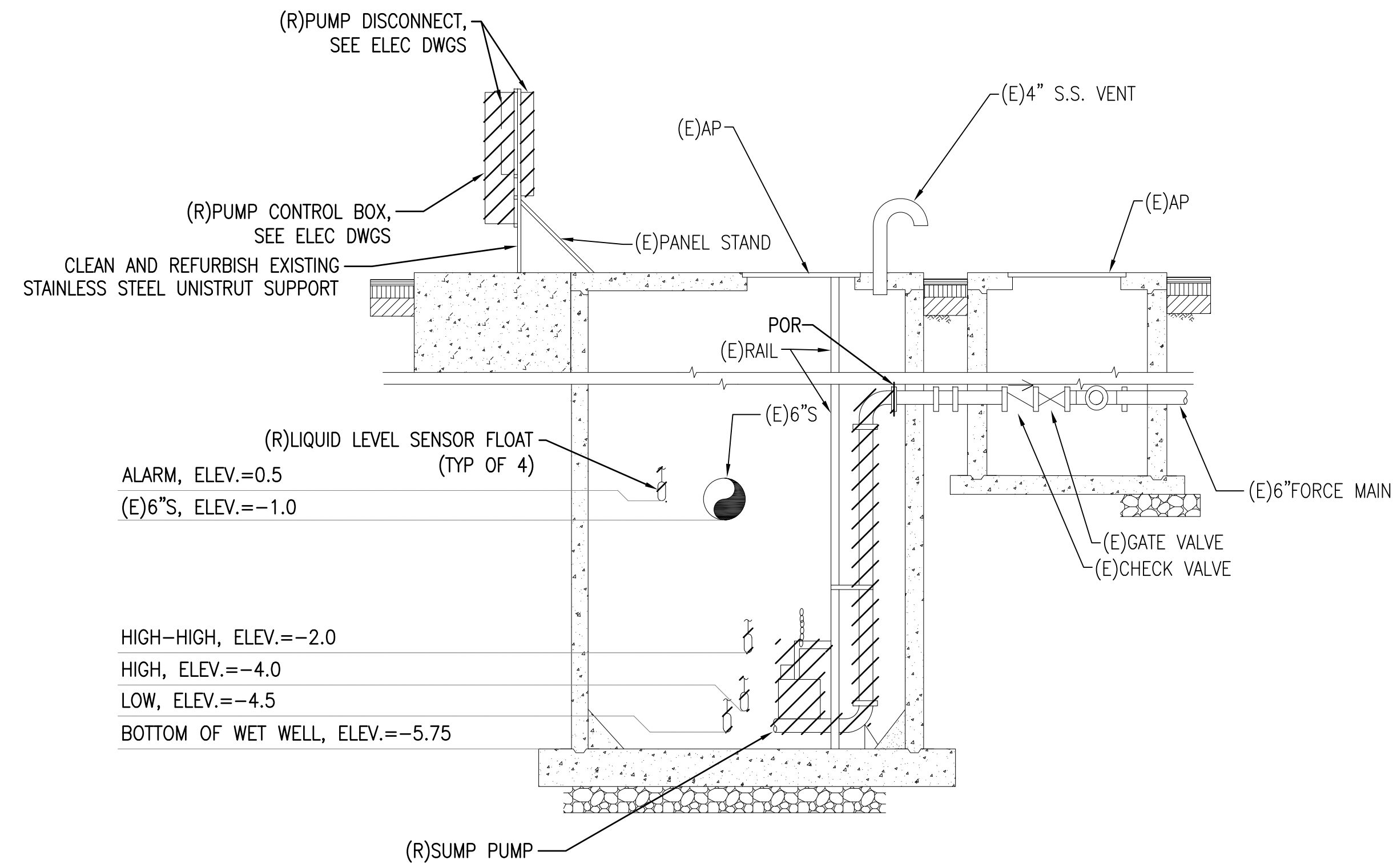
1 PLUMBING DEMOLITION PLAN
SCALE: 1/4" = 1'-0"



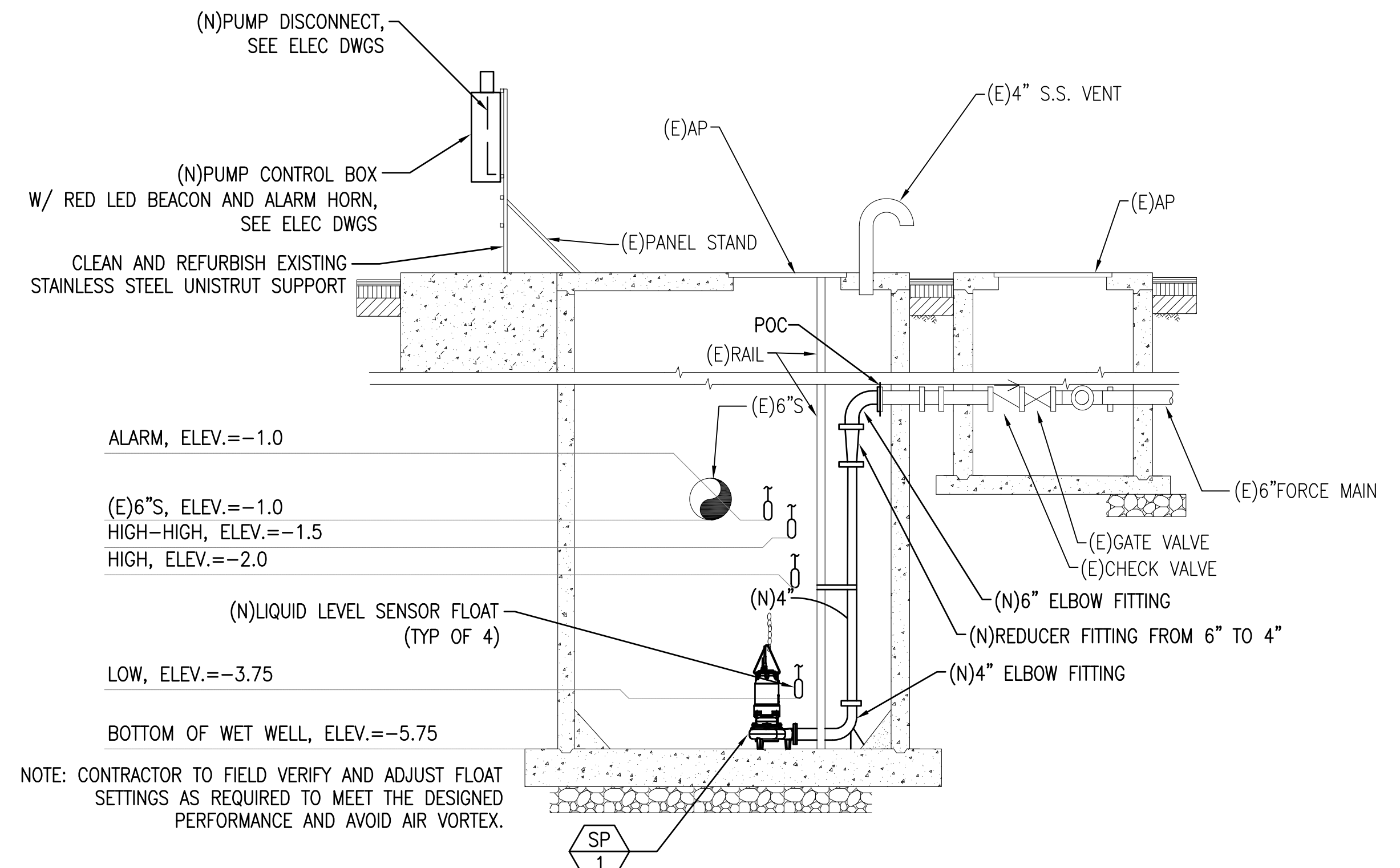
2 NEW PLUMBING PLAN
SCALE: 1/4" = 1'-0"

	REVISION DATE DESCRIPTION BY APPROVED		
	STATE OF HAWAII DEPARTMENT OF TRANSPORTATION HARBORS		
	JOB TITLE REPAIR LIFT STATION AT KAUNAKAKAI HARBOR, MOLOKAI, HAWAII		
	SHEET TITLE PLUMBING DEMOLITION AND NEW PLAN		
DESIGNED BY: MEI DRAWN BY: MEI CHECKED BY: RRT DATE: 02/2026 SCALE: AS SHOWN	JOB NUMBER S30244R	SHEET M-3 4 of 9 SHTS.	





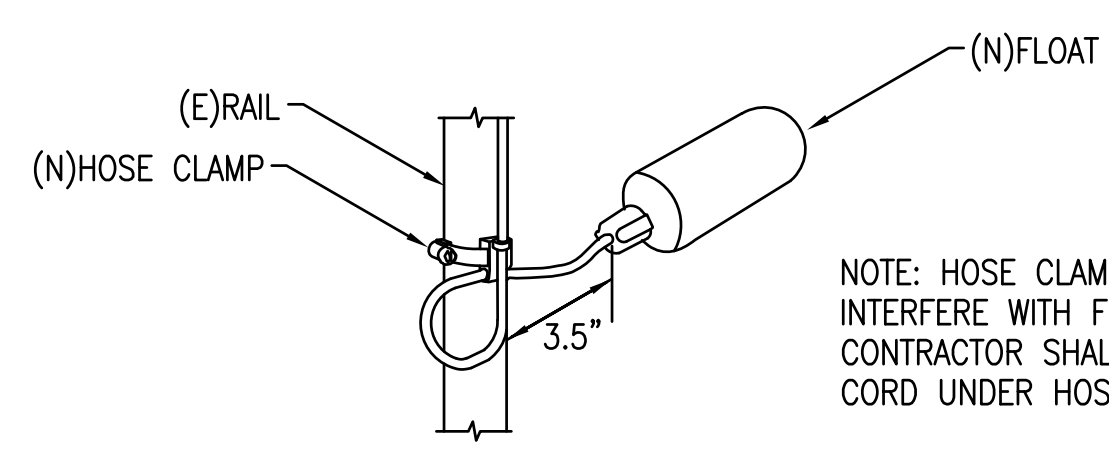
1 PLUMBING DEMOLITION SECTION
SCALE: NOT TO SCALE



2 NEW PLUMBING SECTION
SCALE: NOT TO SCALE

DUPLEX LIFT STATION NOTES:

- PROVIDE AND INSTALL INTRINSICALLY SAFE, HERMETICALLY SEALED, MERCURY TYPE FLOAT SWITCHES THAT CONTROL THE PUMPS IN THE FOLLOWING MANNER AT THE FOLLOWING LEVELS WHEN IN THE "AUTO" MODE (FLOAT SWITCH MOUNTING HEIGHTS ARE INDICATED ON THE DRAWINGS):
 - LOW: POSITIVELY SHUT OFF BOTH PUMPS. ALTERNATE LEAD AND LAG PUMPS AT 12 MINUTES INTERVALS.
 - HIGH: START LEAD PUMP. PUMP DOWN TO "LOW" LEVEL.
 - HIGH-HIGH: START BOTH LEAD AND LAG PUMPS AND PUMP DOWN TO "LOW" LEVEL. PROVIDE AUXILIARY RELAY TO SYSTEM CONTROL PANEL AT OPERATIONS BUILDING CONTROL ROOM AT "HIGH-HIGH" LEVEL.
 - ALARM: ACTIVATE AN EXTERNAL RED LED BEACON AND ALARM HORN MOUNTED ON CONTROL PANEL. CONNECT TO ALOHA TOWER FIRE CONTROL PANEL.
- FLOAT SWITCH CABLE SHALL BE 1/2"-3/4" (TYP. OF 4), OIL RESISTANT PVC. PROVIDE PIPE CLAMP PER FLOAT.
- ALL ABOVE GRADE CONDUIT AND FITTINGS SHALL BE RIGID GALVANIZED STEEL. ALL BELOW GRADE CONDUIT AND FITTINGS SHALL BE PVC COATED STEEL.
- MODIFIED EXISTING LIFTING CHAIN TO MEET THE UPPER GUIDE RAIL HOLDER AND BE ATTACHED TO NEW SUBMERSIBLE PUMP CARRYING HANDLE.
- STAINLESS STEEL SHALL BE TYPE 316. FOR MARINE APPLICATION.
- CONTRACTOR TO FIELD VERIFY AND ADJUST FLOAT SETTINGS AS REQUIRED TO MEET THE DESIGNED PERFORMANCE AND AVOID AIR VORTEX.



3 FLOAT INSTALLATION DETAIL
SCALE: NOT TO SCALE

		REVISION DATE DESCRIPTION BY APPROVED	
STATE OF HAWAII DEPARTMENT OF TRANSPORTATION HARBORS			
JOB TITLE REPAIR LIFT STATION AT KAUNAKAKAI HARBOR, MOLOKAI, HAWAII			
SHEET TITLE LIFT STATION SECTION AND DETAILED DRAWINGS			
DESIGNED BY: MEI DRAWN BY: MEI CHECKED BY: RRT	DATE: 02/2026 SCALE: AS SHOWN	JOB NUMBER S30244R	SHEET M-4 5 of 9 SHTS.

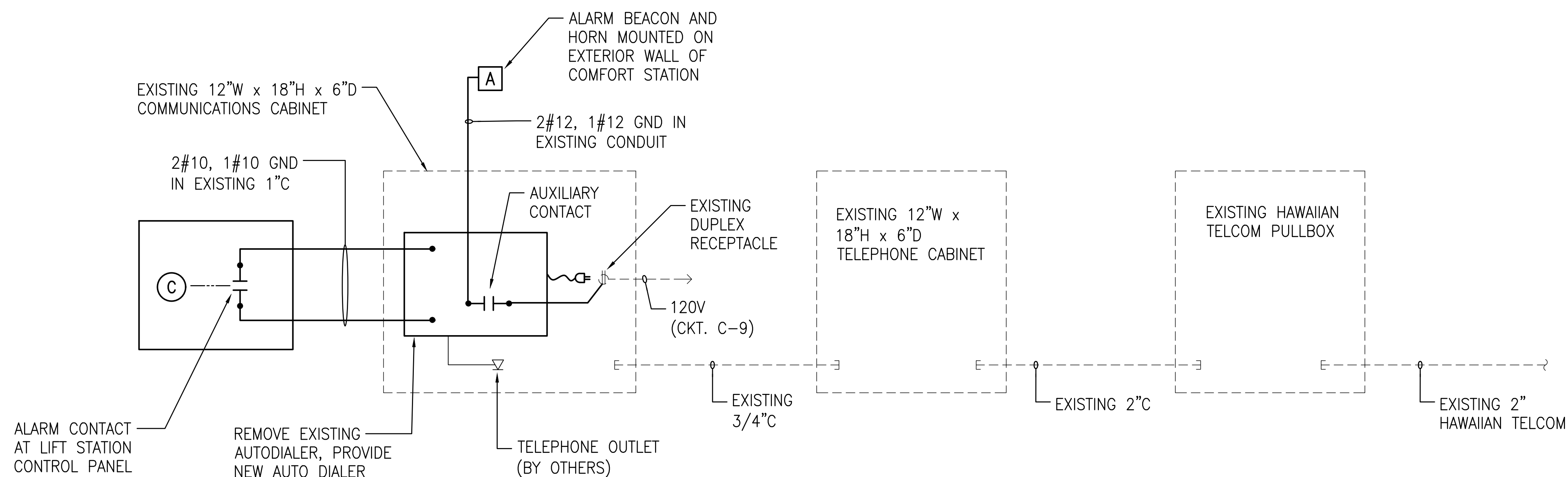
ELECTRICAL SYMBOL LIST		
EXISTING	NEW	DESCRIPTION
(M)		METER SOCKET
□	□	ELECTRICAL EQUIPMENT
□	□	PANELBOARD
—e—		UNDERGROUND CONDUIT
—e—		SURFACE MOUNTED CONDUIT
—○—	—○—	CIRCUIT BREAKER
—X—		POWER TRANSFORMER
⏏	⏏	GROUND
	X	DENOTES DEMOLITION/REMOVAL
	①	NOTE INDICATOR
	1 E-X	DETAIL INDICATOR: TOP HALF DENOTES DETAIL NUMBER, BOTTOM HALF DENOTES SHEET NUMBER
	+42"	DENOTES 42" ABOVE FINISHED FLOOR OR GRADE
	GND	GROUND
	GRS	GALVANIZED RIGID STEEL
	HECO	HAWAIIAN ELECTRIC
	KVA	KILOVOLT-AMPERE
	SS	STAINLESS STEEL
	WP	WEATHERPROOF
	XFMR	TRANSFORMER

GENERAL ELECTRICAL NOTES:

- ALL WORK SHOWN ON ELECTRICAL DRAWINGS IS NEW UNLESS OTHERWISE NOTED.
- CONTRACTOR TO VERIFY ALL EXISTING CONDITIONS AND DIMENSIONS IN THE FIELD PRIOR TO COMMENCEMENT OF NEW WORK.
- EXISTING CONDITIONS: ALL EXISTING UNDERGROUND UTILITIES INDICATED ON THE DRAWINGS ARE APPROXIMATE LOCATIONS BASED ON INFORMATION CONTAINED IN AVAILABLE "AS-BUILT" DRAWINGS. CONTRACTOR SHALL BE RESPONSIBLE FOR TONING THE ROUTES OF ANY GROUND DISTURBING WORK/EXCAVATIONS TO IDENTIFY ANY POTENTIAL CONFLICTS PRIOR TO EXCAVATION. DAMAGE TO EXISTING UTILITIES CAUSED BY THE CONTRACTOR AS A RESULT OF THE FAILURE TO TONE THE ROUTES PRIOR TO EXCAVATION WORK, WILL REQUIRE THE CONTRACTOR TO REPAIR THE DAMAGE AT NO ADDITIONAL COST TO THE STATE.
- THE WORK SCHEDULE SHALL BE COORDINATED WITH USERS, THE HARBORS ENGINEER, THE HARBORS MAUI DISTRICT MANAGER AND KAUNAKAKAI HARBOR MASTER.
- THE CONTRACTOR SHALL SCHEDULE ALL WORK TO MINIMIZE DISRUPTION OF USERS' OPERATIONS.
- ALL EXISTING ELECTRICAL EQUIPMENT AND FACILITIES NOT SCHEDULED FOR DEMOLITION SHALL REMAIN OPERATIONAL DURING CONSTRUCTION. PROVIDE TEMPORARY POWER SOURCE(S) SUCH AS PORTABLE GENERATOR, TEMPORARY WIRING, ETC. AS REQUIRED. CONTRACTOR TO MINIMIZE OUTAGES AND COORDINATE WITH THE HARBORS ENGINEER, HARBORS MAUI DISTRICT, AND ALL USERS AND TENANTS AT LEAST TWO WEEKS PRIOR TO ANY OUTAGES.
- CONTRACTOR SHALL SCHEDULE IN WRITING ALL DEMOLITION WORK WITH USERS AND HARBORS CONSTRUCTION ENGINEER. MINIMUM OF 14 CALENDAR DAYS ADVANCE NOTICE SHALL BE GIVEN.
- THE ELECTRICAL CONTRACTOR SHALL COORDINATE HIS WORK WITH THE OTHER TRADES TO AVOID CONFLICTS WITH MECHANICAL AND STRUCTURAL ELEMENTS OF THE PROJECT.
- REMOVE AND DISPOSE OF ALL ELECTRICAL EQUIPMENT AND CONDUCTORS INDICATED FOR DEMOLITION. UNDERGROUND CONDUIT SHALL BE ABANDONED IN-PLACE UNLESS OTHERWISE INDICATED.
- SAWCUT AND PATCH EXISTING SURFACES AS REQUIRED. RESTORE EXISTING PAVEMENT MARKINGS TO ORIGINAL OR BETTER CONDITION.

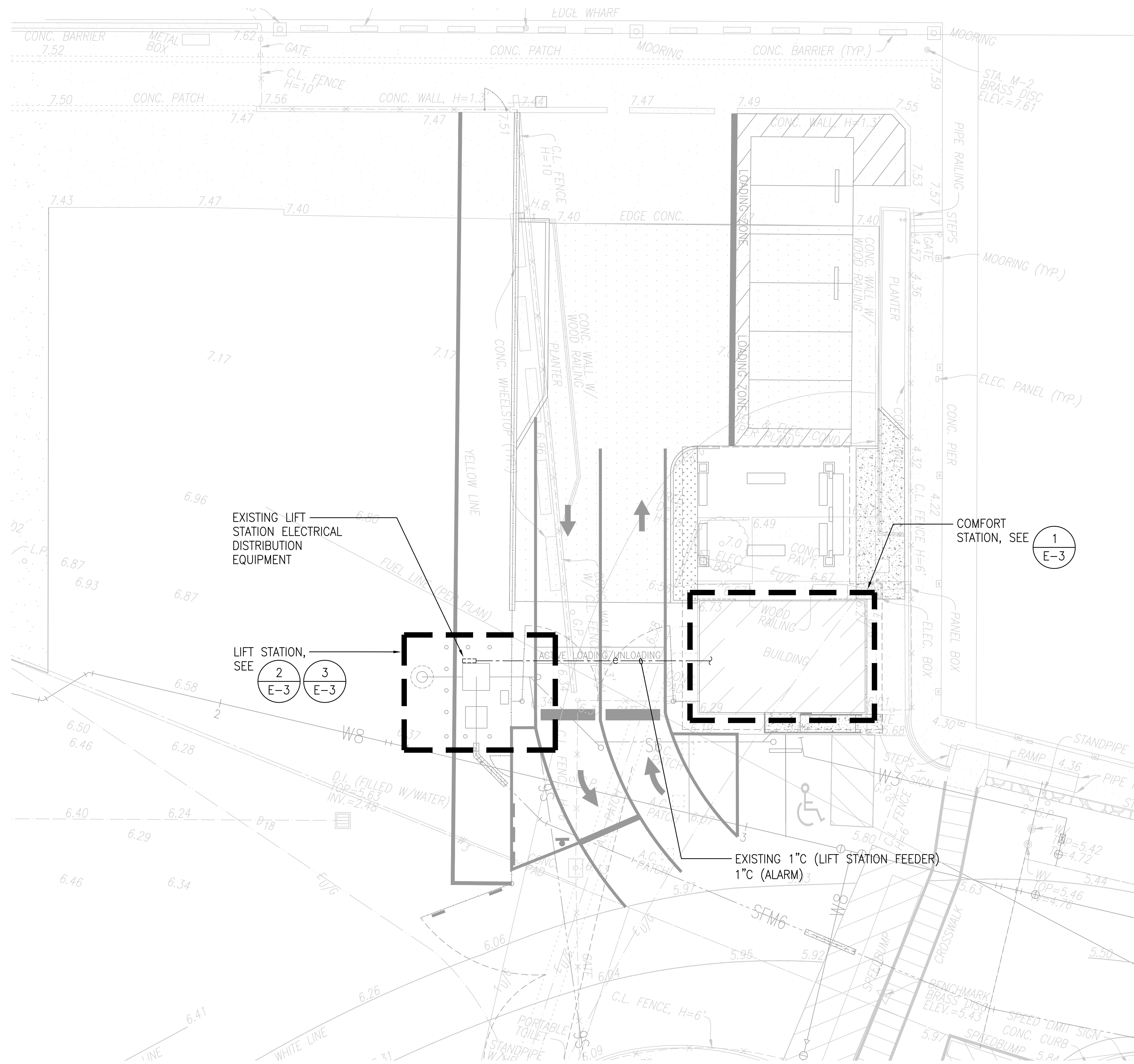
ELECTRICAL HAZARDOUS LOCATION NOTE

THE AREA INSIDE OF THE LIFT STATION WET WELL IS A CLASS 1, DIVISION 1, GROUP D HAZARDOUS LOCATION. THE AREA BETWEEN 3 FEET HORIZONTALLY AND 18" ABOVE THE WET WELL HATCH OPENING IS A CLASS 1, DIVISION 2, GROUP D HAZARDOUS LOCATION. ALL ELECTRICAL EQUIPMENT WITHIN THE HAZARDOUS LOCATIONS SHALL BE RATED USE IN THE RESPECTIVE HAZARDOUS LOCATIONS CLASSIFICATIONS.

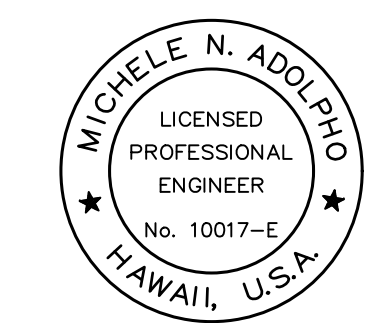
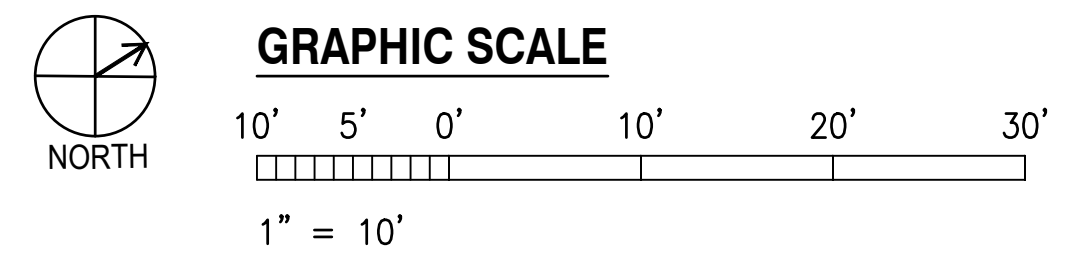


LIFT STATION ALARM WIRING DIAGRAM
NO SCALE

	REVISION	DATE	DESCRIPTION	BY	APPROVED
	STATE OF HAWAII DEPARTMENT OF TRANSPORTATION HARBORS				
	JOB TITLE REPAIR LIFT STATION AT KAUNAKAKAI HARBOR, MOLOKAI, HAWAII				
	SHEET TITLE ELECTRICAL SYMBOL LIST, GENERAL NOTES AND DUCT DETAIL				
DESIGNED BY: CEI	JOB NUMBER S30244R				SHEET E-1
DRAWN BY: OL					6 OF 9 SHTS.
CHECKED BY: M.A.					
DATE: 02/2026					
SCALE: AS SHOWN					

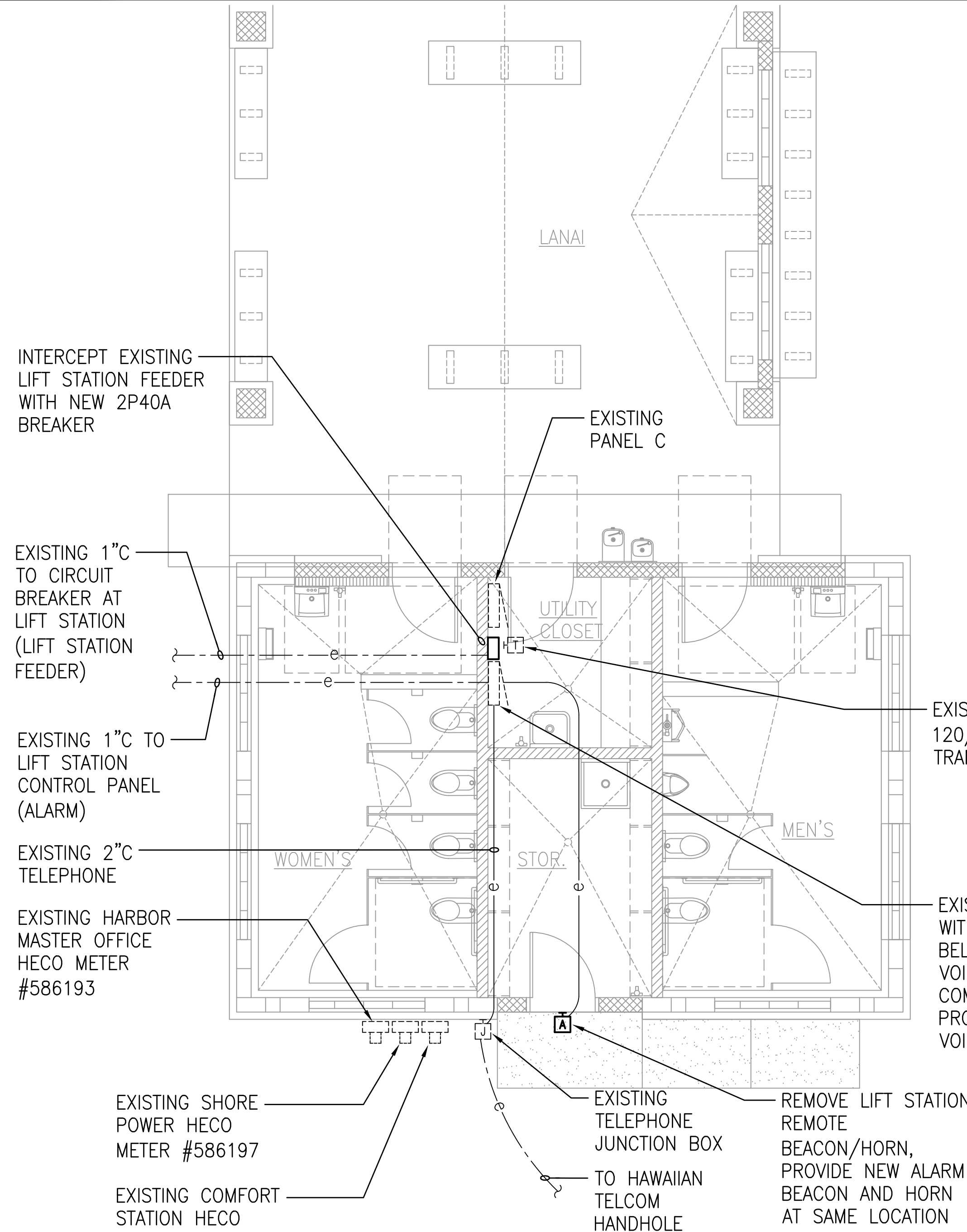


1 ELECTRICAL SITE PLAN
E-2 SCALE: 1" = 10'-0"

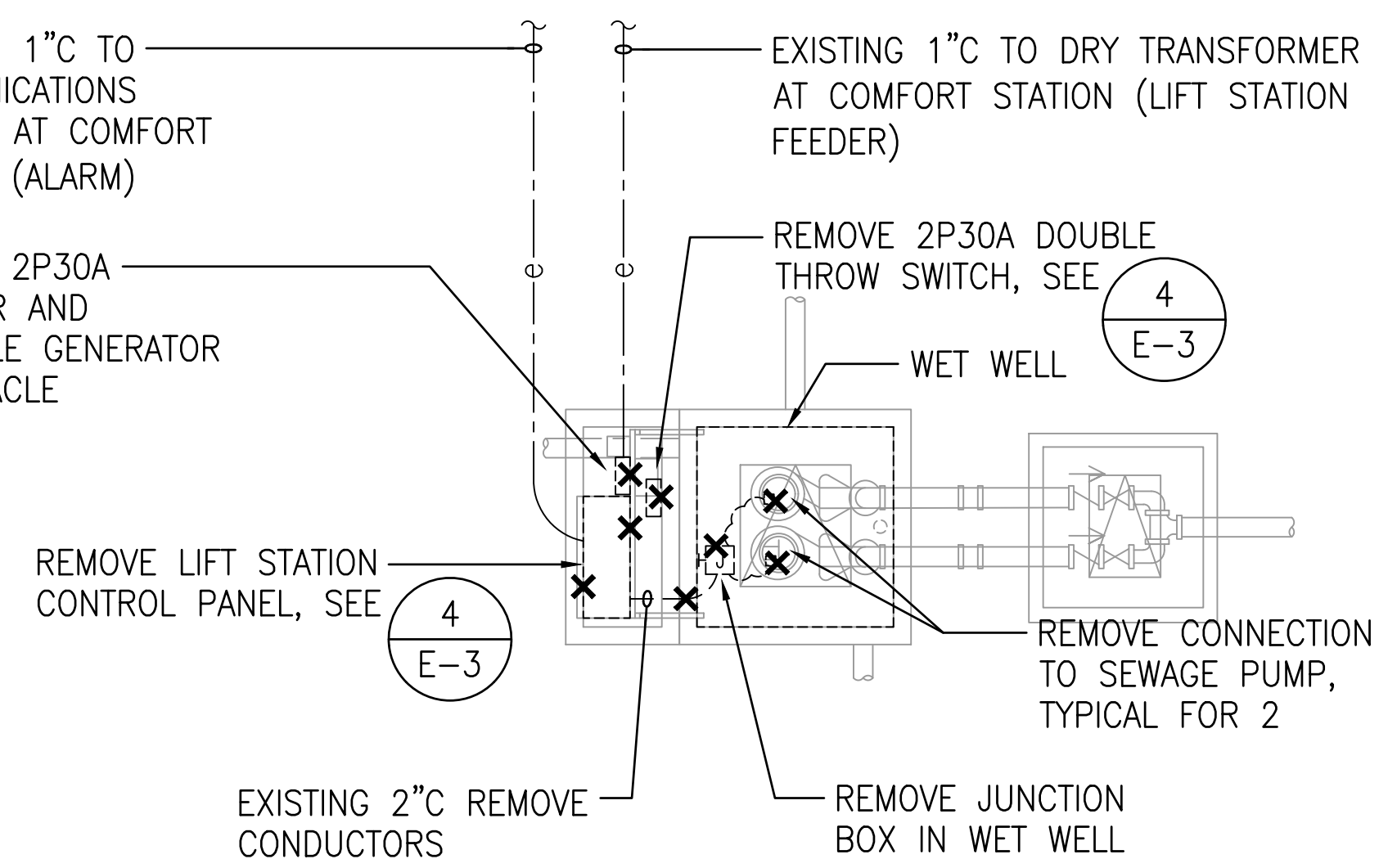


THIS WORK WAS PREPARED BY ME OR UNDER MY SUPERVISION
 EXP 4-30-26
Michele N. Adolp
 COFFMAN ENGINEERS, INC.

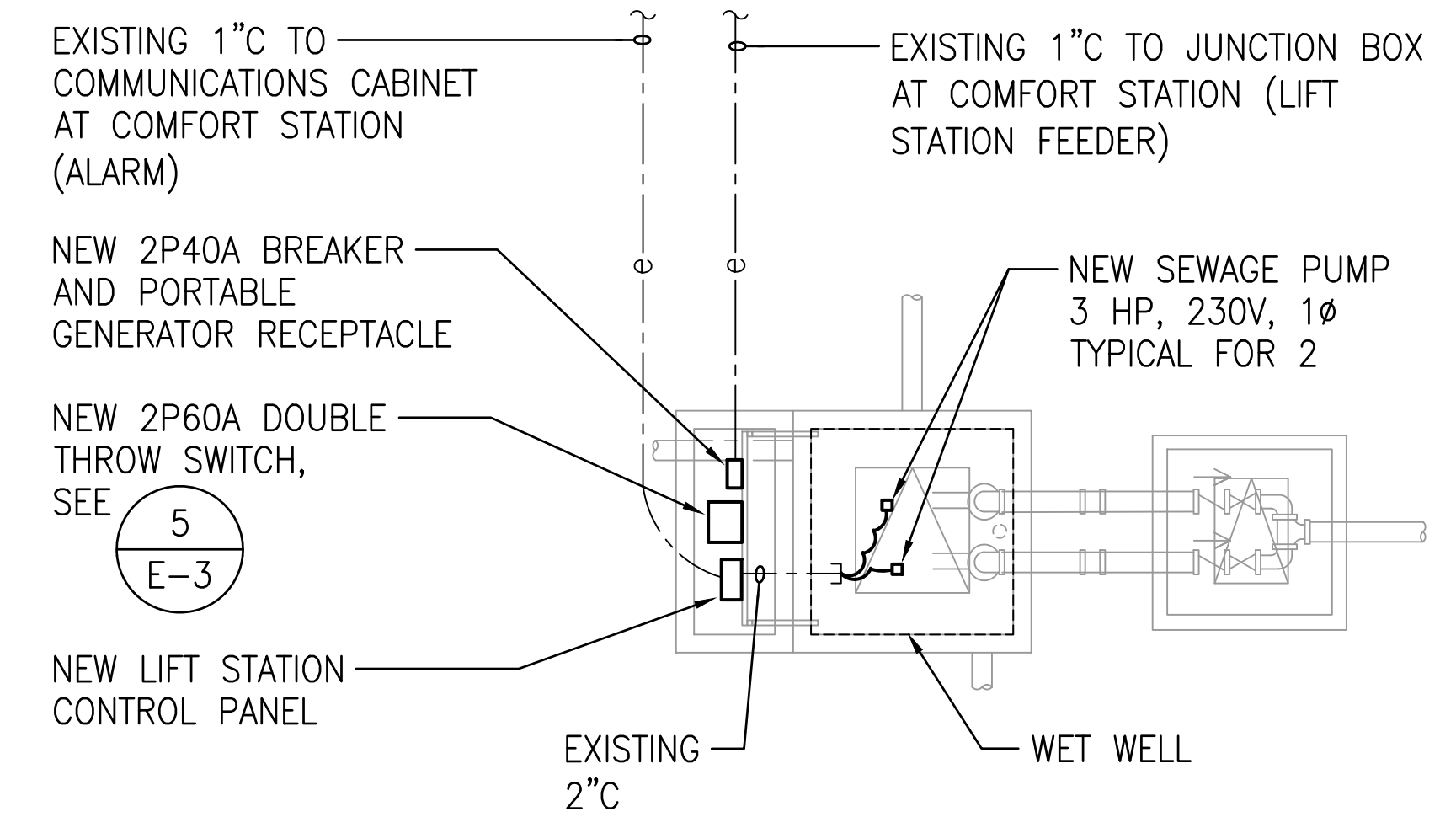
REVISION	DATE	DESCRIPTION	BY	APPROVED
STATE OF HAWAII DEPARTMENT OF TRANSPORTATION HARBORS				
JOB TITLE REPAIR LIFT STATION AT KAUNAKAKAI HARBOR, MOLOKAI, HAWAII				
SHEET TITLE ELECTRICAL SITE PLAN				
DESIGNED BY: CEI				SHEET E-2
DRAWN BY: OL				JOB NUMBER S30244R 7 of 9 SHEETS
CHECKED BY: M.A.				
DATE: 02/2026				
SCALE: AS SHOWN				



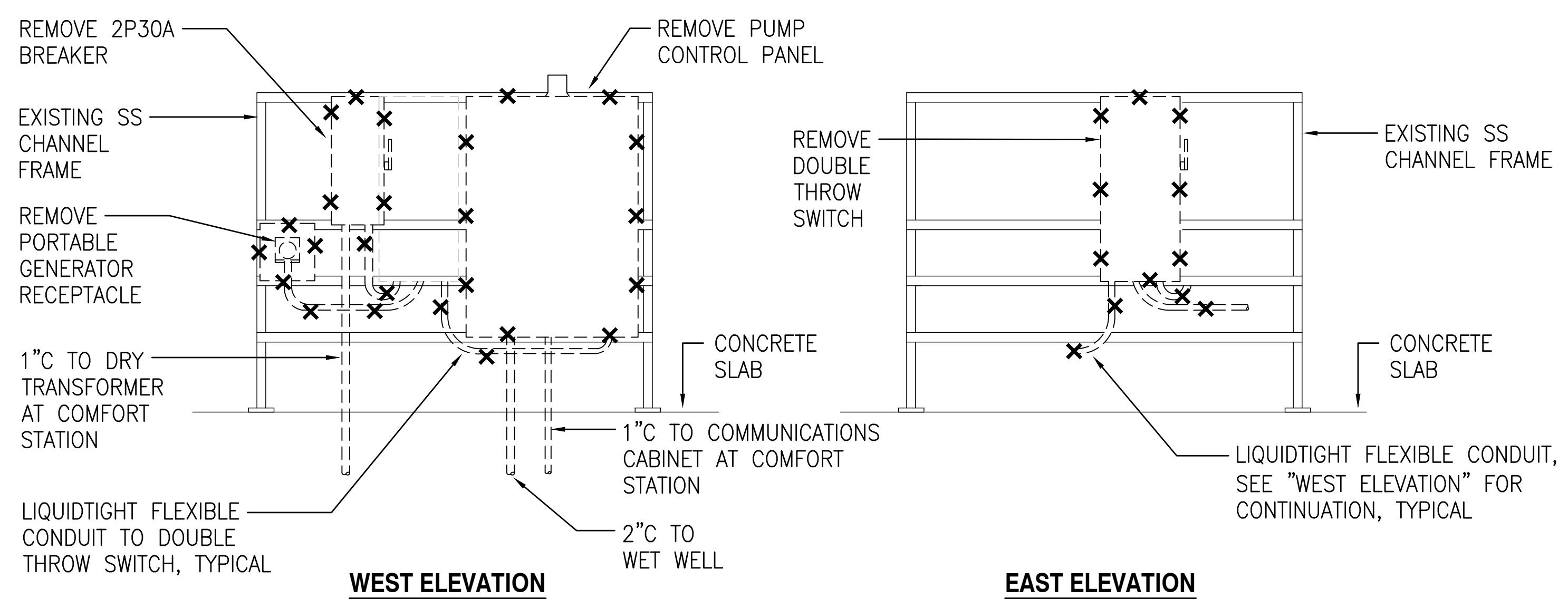
1 COMFORT STATION ELECTRICAL PLAN
 E-3 SCALE: 1/4" = 1'-0"
 NORTH



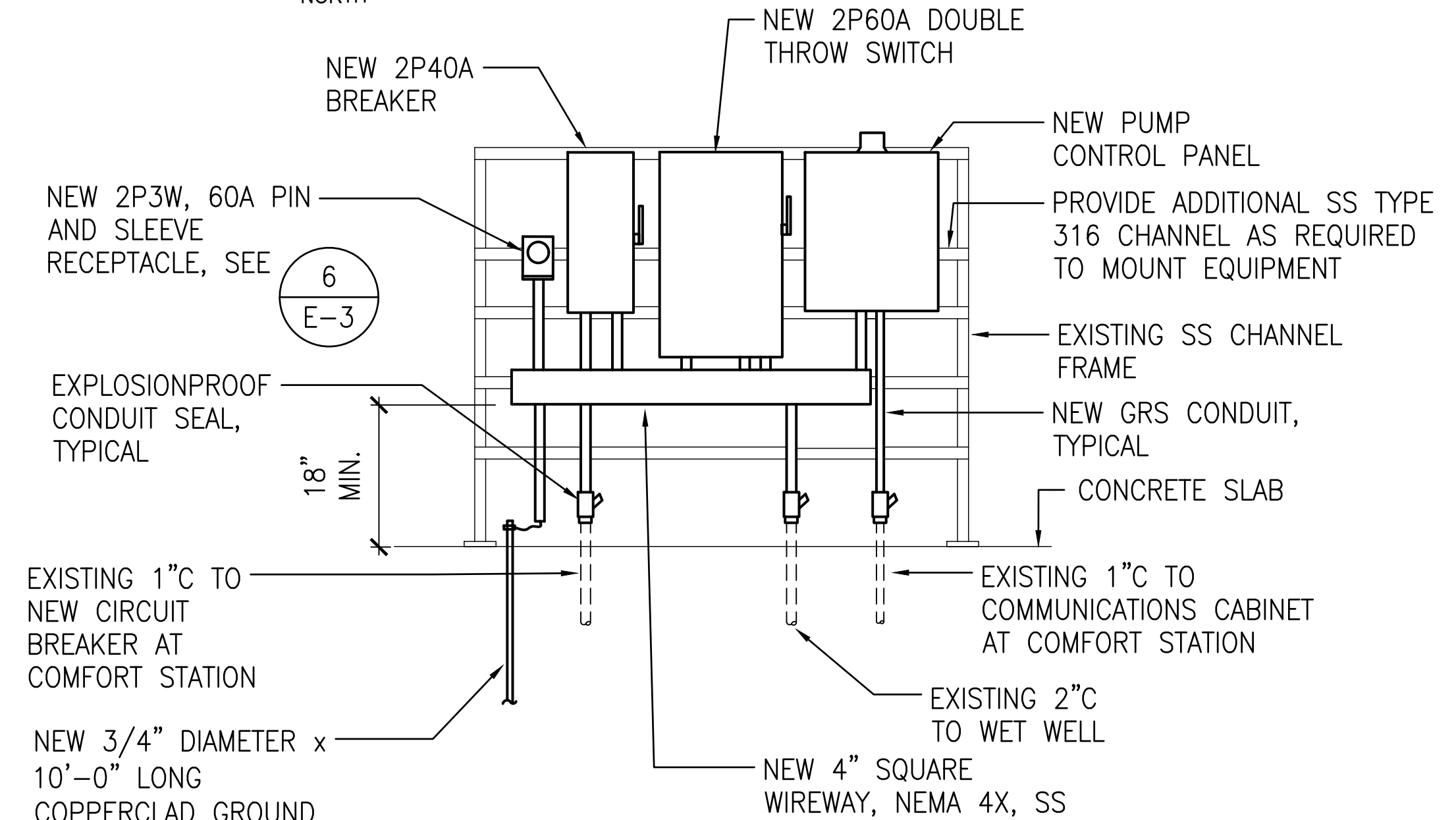
2 LIFT STATION ELECTRICAL DEMOLITION PLAN
 E-3 SCALE: 1/4" = 1'-0"
 NORTH



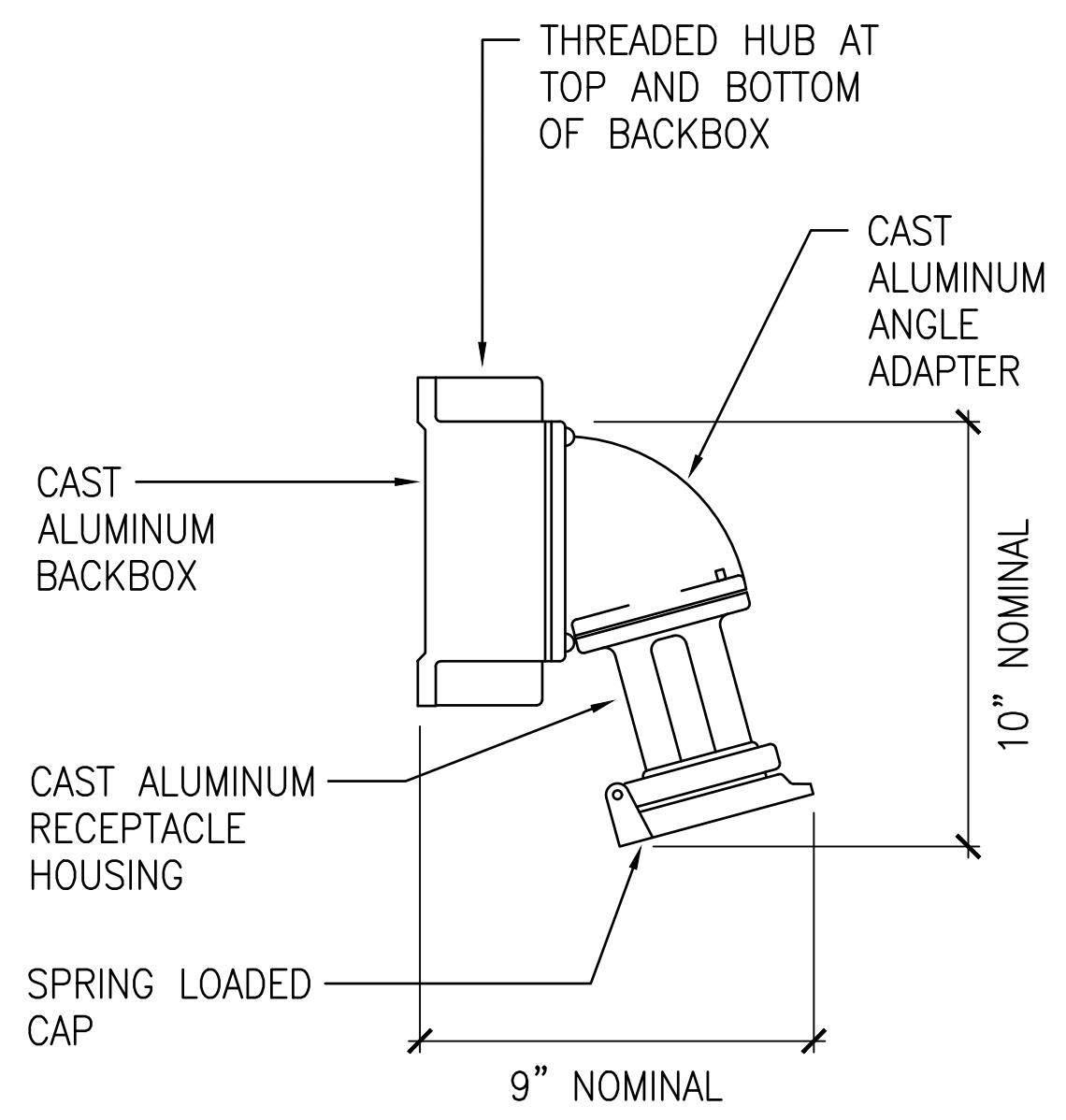
3 LIFT STATION ELECTRICAL PLAN
 E-3 SCALE: 1/4" = 1'-0"
 NORTH



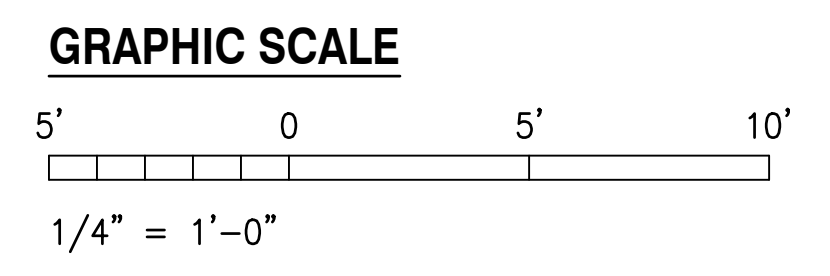
4 EXISTING PUMP EQUIPMENT ELEVATIONS
 E-3 NOT TO SCALE



5 NEW PUMP EQUIPMENT ELEVATION
 E-3 NOT TO SCALE

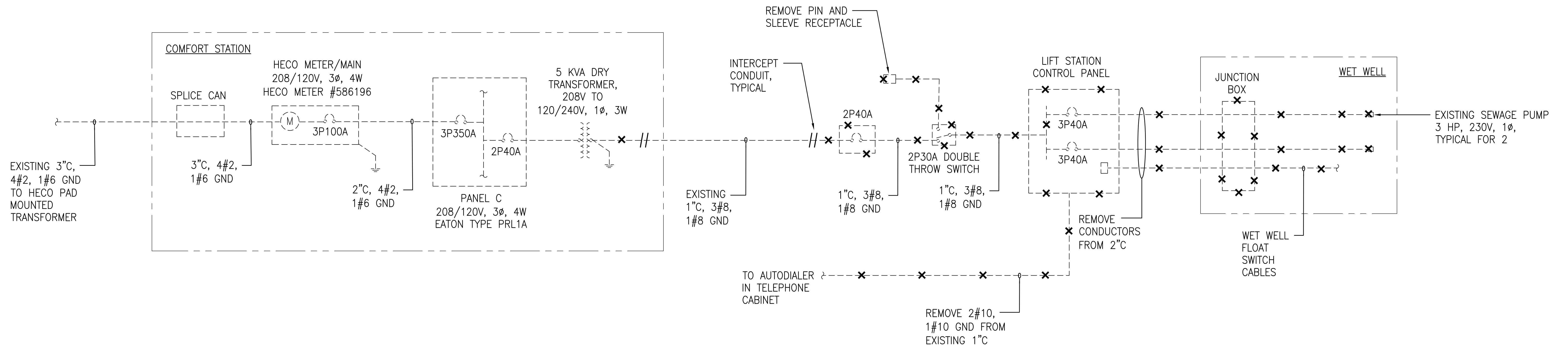


6 PIN AND SLEEVE RECEPTACLE
 E-3 NOT TO SCALE

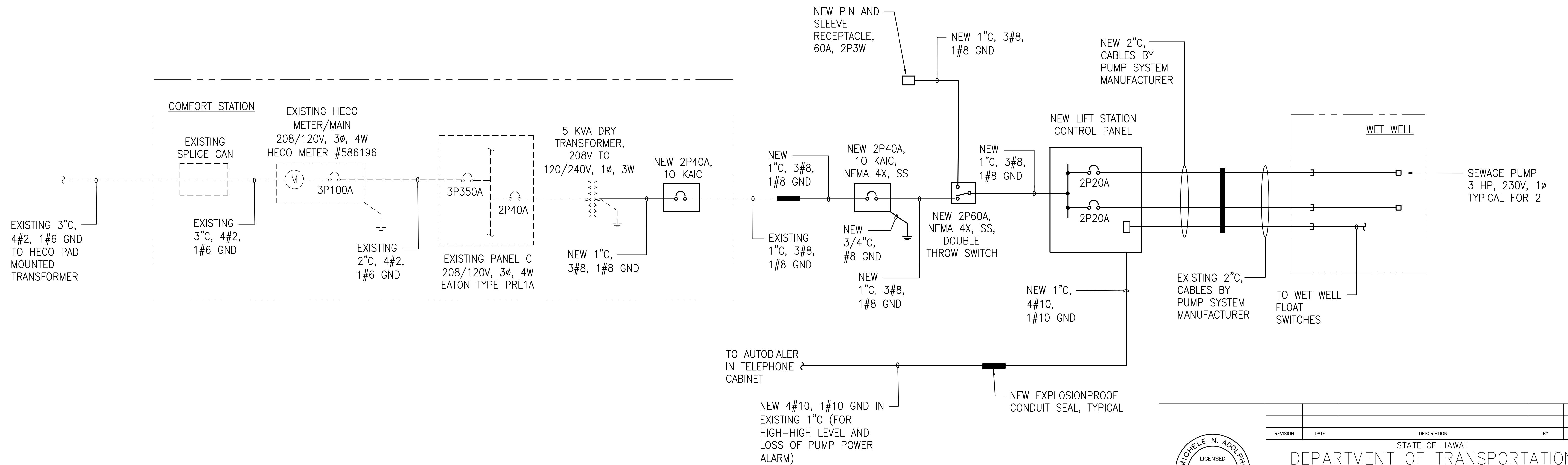


	REVISION	DATE	DESCRIPTION	BY	APPROVED
	STATE OF HAWAII DEPARTMENT OF TRANSPORTATION HARBORS				
	JOB TITLE REPAIR LIFT STATION AT KAUNAKAKAI HARBOR, MOLOKAI, HAWAII				
	SHEET TITLE ELECTRICAL PLANS				
DESIGNED BY: CEI	JOB NUMBER S30244R				SHEET E-3 8 OF 9 SHEETS
DRAWN BY: OL					
CHECKED BY: M.A.					
DATE: 02/2026					
SCALE: AS SHOWN					

THIS WORK WAS PREPARED BY ME OR UNDER MY SUPERVISION EXP 4-30-26
 MICHELE N. ADOLPHO
 COFFMAN ENGINEERS, INC.



1 DEMOLITION - ONE LINE DIAGRAM
E-4 NO SCALE



2 NEW WORK - ONE LINE DIAGRAM
E-4 NO SCALE

		REVISION DATE DESCRIPTION BY APPROVED	
STATE OF HAWAII DEPARTMENT OF TRANSPORTATION HARBORS			
JOB TITLE REPAIR LIFT STATION AT KAUNAKAKAI HARBOR, MOLOKAI, HAWAII			
SHEET TITLE ONE LINE DIAGRAMS			
DESIGNED BY: CEI DRAWN BY: OL CHECKED BY: M.A. DATE: 02/2026 SCALE: AS SHOWN	JOB NUMBER S30244R		SHEET E-4 9 of 9 SHTS.

Printed: 02/09/2026 10:25:00 AM